



# PlayStation 2 Teardown

I'm tearing down all the way to the motherboard. And also will show you other parts of the playstation 2

Written By: Victor Mendoza



# INTRODUCTION

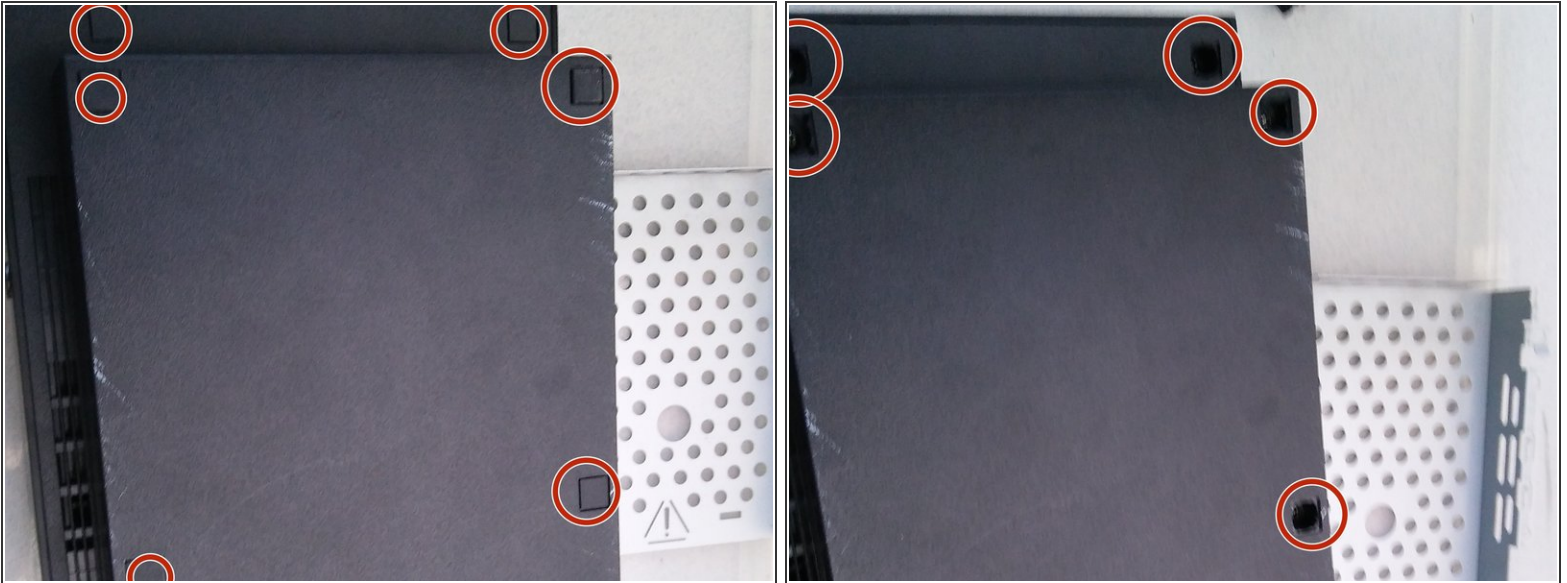
my pictures don't explain much but my captions are going to help a lot.



## TOOLS:

- [Phillips #00 Screwdriver](#) (1)
  - [Metal Spudger](#) (1)
  - [Phillips #1 Screwdriver](#) (1)
-

## Step 1 — revealing the screws



- first what you need to do is take all the plastics of the bottom of the device which will reveal the screws.

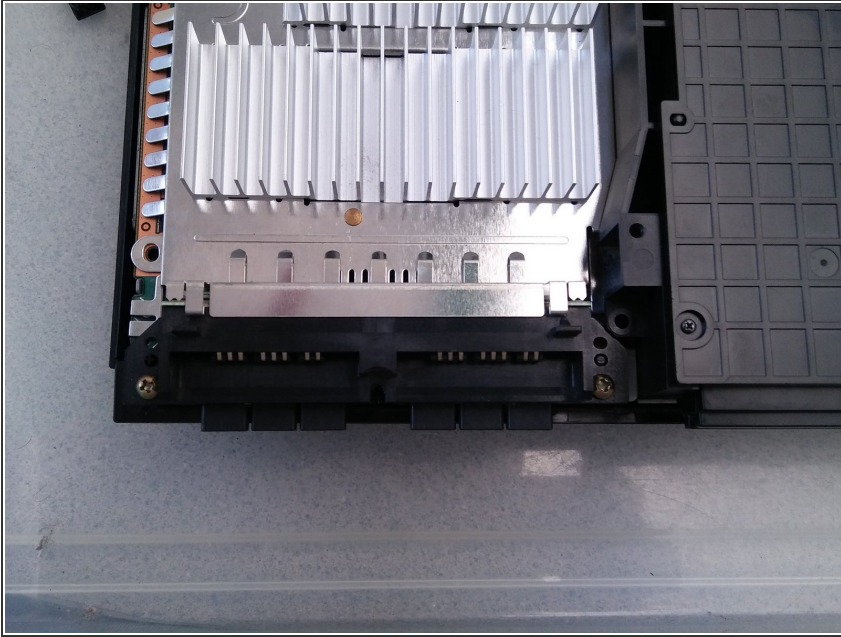
## Step 2



- loosen all the screws with the hillips 00 Screwdriver and then take screws out.

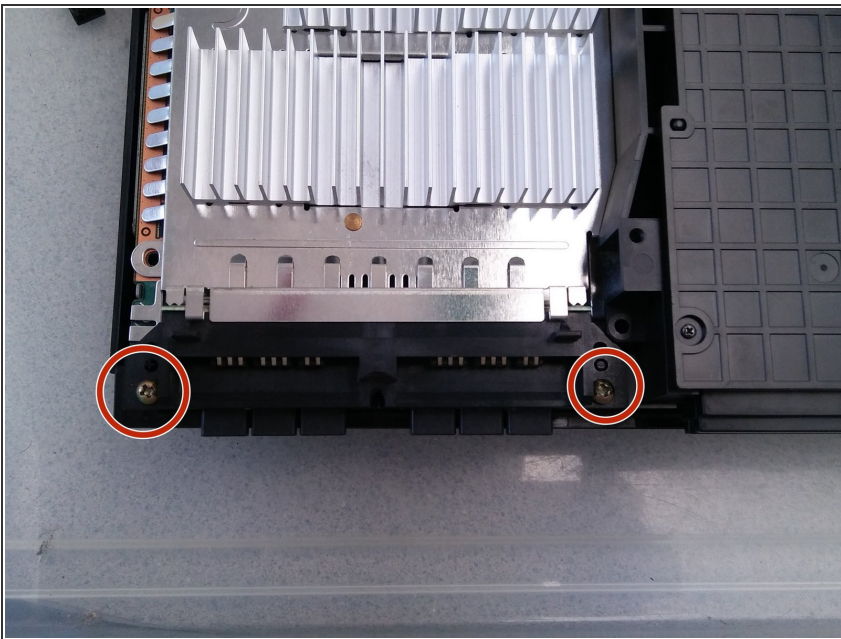


### Step 3



- After taking all the screws off the will loosen. So then what you do there you pull it up then forward or away depending were your standing.

### Step 4



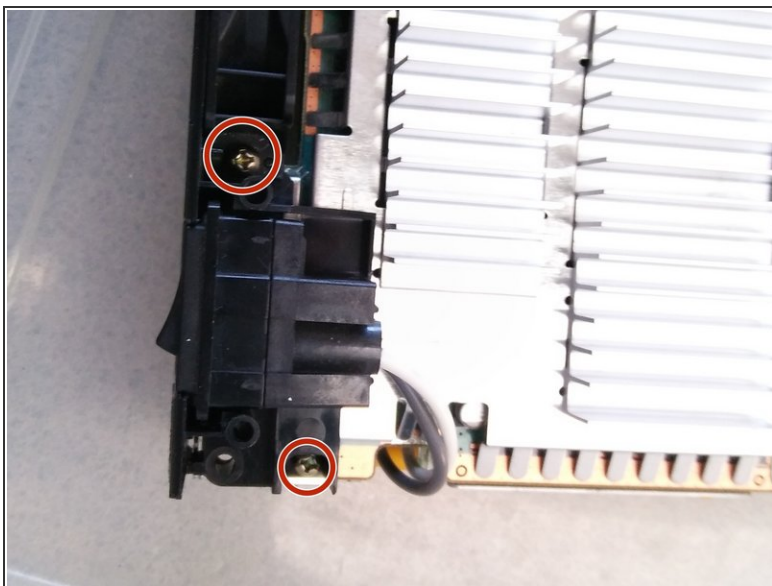
- Once you've open the device you'll see 4 copper screws. Unscrew the front screws to unlock the bottom case of the device.

## Step 5



- next loosen the screws with

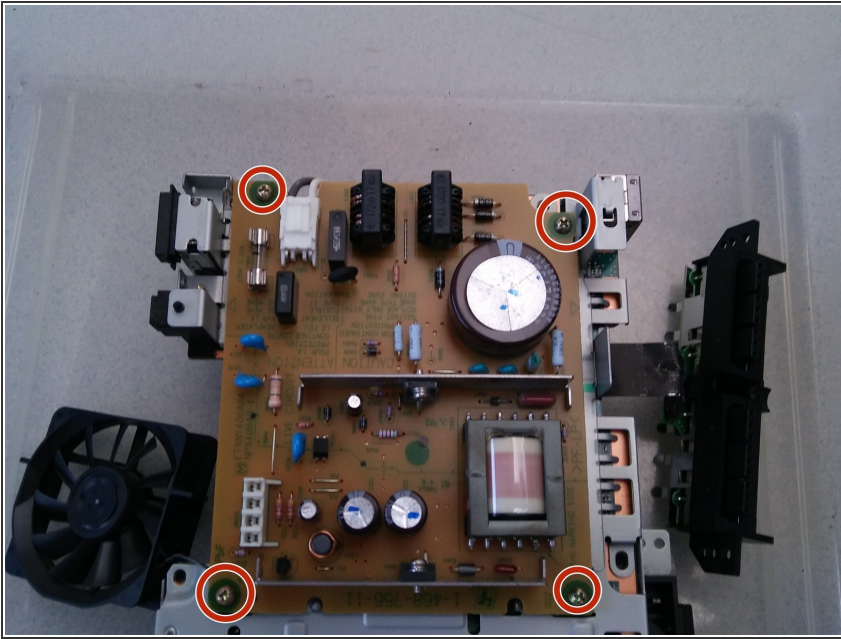
## Step 6



- now unscrew the 2 copper screws to be able to make the bottom case will come out reveling a copper screw



## Step 7



- now flip the device to reveal the bottom. Now as soon as you flip you'll see 4 more copper screws, then your going to need to unscrew them unlocking the motherboard.

## Step 8



- slowly pluck out the motherboard without braking no ribbons form the device. And that's how you take the motherboard out.